

Robb Report

100
CRITICS' CHOICE

Robb Report

LUXURY RESORTS

Summer 2008

100 ULTIMATE ESCAPES

Aspen Bora Bora Courchevel Dubai Fiji Las Vegas
Malaysia Maldives Maui Napa Valley Patagonia Positano
Saint-Tropez Seychelles & More



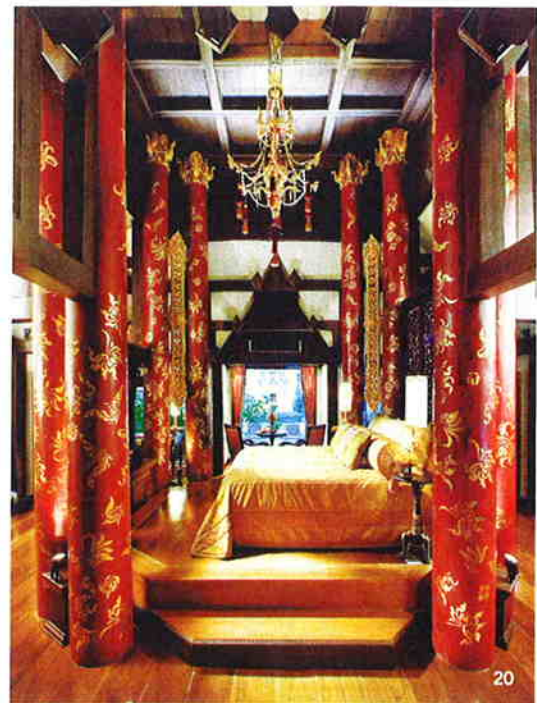
Robb Report LUXURY RESORTS

SUMMER 2008, VOLUME III



ASIA & THE PACIFIC

- | | | | |
|----|---|----|--|
| 18 | Banyan Tree Lijiang
Lijiang, China | 33 | The Wakaya Club & Spa
Wakaya Island, Fiji |
| 20 | Mandarin Oriental Dhara Dhevi
Chiang Mai, Thailand | 34 | The River House
Balapitiya, Sri Lanka |
| 22 | Qualia
Hamilton Island, Australia | 35 | Four Seasons Resort Maldives
at Landaa Giraavaru
Baa Atoll, Maldives |
| 24 | Amansara, Siem Reap, Cambodia | 36 | Voyages Longitude 131°
Uluru, Australia |
| 25 | Four Seasons Resort Langkawi,
Malaysia, Langkawi, Malaysia | 36 | Huka Lodge
Taupo, New Zealand |
| 26 | The Lodge at Kauri Cliffs
Northland, New Zealand | 36 | St. Regis Resort Bora Bora
Bora Bora, French Polynesia |
| 27 | Amankila, Bali, Indonesia | 36 | Amanbagh, Rajasthan, India |
| 28 | Four Seasons Resort Chiang
Mai, Chiang Mai, Thailand | 38 | Oberoi Udaivilas
Udaipur, India |
| 29 | Cocoa Island
South Male Atoll, Maldives | 38 | Wildflower Hall
Himachal Pradesh, India |
| 30 | Six Senses Hideaway Yao Noi
Yao Noi, Thailand | 38 | Amanpuri, Phuket, Thailand |
| 31 | Amankora, Bhutan | 38 | The Farm at Cape Kidnappers
Hawke's Bay, New Zealand |





Smooth Sailing

Hamilton Island's owners, Robert and Sandy Oatley, needed a place to entertain their friends.

The father-and-son team had sold their winery, Rosemount Estate, to Australia's largest wine producer in 2001 for \$1.5 billion. Two years later, they purchased Hamilton and proceeded to

invest millions to refit the island's existing family-friendly resorts. But Hamilton—and Australia at large—was still missing something of importance to the Oatleys and their jet-set friends: a true luxury resort. (Sandy has publicly decried the country's lack of high-caliber lodgings.) So in October, after a more than \$70 million investment, the Oatleys opened Qualia, a collection of private pavilions on 30 acres overlooking Whitsunday Island on the Great Barrier Reef.

A host of the Oatleys' acquaintances will arrive on Hamilton Island this August to compete for the South Pacific Cup (79-year-old Robert is a yacht-racing fanatic). Upon checking into Qualia, the yachtsmen will no doubt be pleased with their views of the Coral Sea, which is visible from nearly every vantage point at the resort. Like any Qualia guest, the competitors will have virtually free reign of Hamilton, with the ability to access facilities at the island's other hotels. Only Qualia guests, however, may pass through the tall

stone gates that mark the entrance to the resort.

The Oatleys hired architect Chris Beckingham, who also designed the family's Hamilton Island home, to construct Qualia as a luxurious yet simple—and, thus, truly Australian—environment. Wide eaves and breezeways shaded by eucalyptus trees lead to one-bedroom pavilions detailed with artisan woodwork and topped with corrugated iron roofs. Modern furnishings trimmed in Armagnac- and saffron-colored fabrics decorate the rooms and Qualia's two restaurants.

Robert and Sandy's work in the Whitsundays is by no means finished. By 2009, they plan to open a golf course on nearby Dent Island and an expanded marina and yacht club on Hamilton. In the meantime, the Oatleys have their sights set on August's South Pacific Cup, during which their *Wild Oats X* is a favorite to win.

DENA BRAUN

Qualia, +61.2.9433.3349, www.qualia.com.au

SETTING

On the northern tip of Hamilton Island, part of Australia's Whitsunday Islands and the gateway to the Great Barrier Reef.

SLEEPING

The 33 Leeward Pavilions and 26 Windward Pavilions offer private plunge pools, while the two-bedroom Beach House has a swimming pool and guest quarters.

DINING

Contemporary Australian cuisine from chef Stephane Rio at the Long Pavilion and in the more casual Pebble Beach restaurant.

DIVERSIONS

Kayaking, swimming, snorkeling, chartering a catamaran to nearby islands, and picnicking on nearby Henning Island. The owners plan to open a golf course on nearby Dent Island by 2009.

RATES

\$1,240–\$2,655



MAIN AND BOTTOM RIGHT: JOHN BRAUN